

Public release date: 29-Apr-2009[[Print](#) | [E-mail](#) | [Share](#)] [[Close Window](#)]

Contact: Rob Graham
rob.graham@childrens.harvard.edu
 617-919-3110
[Children's Hospital Boston](#)

A glimpse at vision: First impressions count

Human brain can recognize objects much faster than some have thought

Human beings far outpace computers in their ability to recognize faces and other objects, handling with ease variations in size, color, orientation, lighting conditions and other factors. But how our brains handle this visual processing isn't known in much detail. Researchers at Children's Hospital Boston, taking advantage of brain mapping in patients about to undergo surgery for epilepsy, demonstrate for the first time that the brain, at a very early processing stage, can recognize objects under a variety of conditions very rapidly. The findings were published in the journal *Neuron* on April 30th.

Visual information flows from the retina of the eye up through a hierarchy of visual areas in the brain, finally reaching the temporal lobe. The temporal lobe, which is ultimately responsible for our visual recognition capacity and our visual perceptions, also signals back to earlier processing areas. This cross-talk solidifies visual perception.

"What hasn't been entirely clear is the relative contribution of these "feed-forward" and "feed-back" signals," says Gabriel Kreiman, PhD, of the Department of Ophthalmology at Children's Hospital Boston and the study's senior investigator. "Some people think that if you don't have feedback, you don't have vision. But we've shown that there is an initial wave of activity that gives a quick initial impression that's already very powerful."

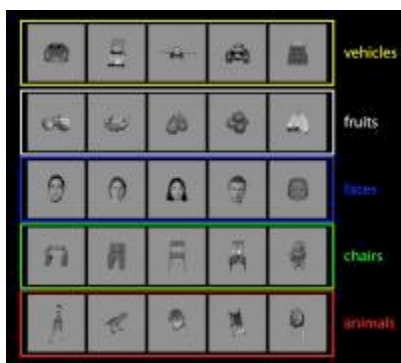


IMAGE: While brain activity was recorded, subjects were shown five categories of objects, with five examples within each category. Each

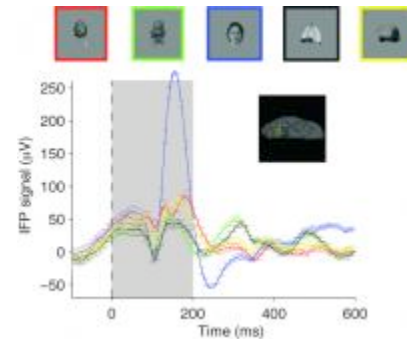


IMAGE: These are recordings from a single electrode, showing speed and strength of responses to different visual stimuli (red, animals; green, chairs; blue, human faces; black, fruit; yellow, vehicles). The inset...

[Click here for more information.](#)

Although feedback from higher brain areas may occur later and is often important, very fast visual processing would have an evolutionary advantage in critical situations, such as encountering a predator, Kreiman adds.

Previous human studies have relied on noninvasive brain monitoring, either with electrodes placed on the surface of the head or with imaging techniques, and have captured brain activity at intervals of seconds – lagging considerably behind the brain's actual processing speeds. Moreover, these techniques gather data from fairly general brain locations. By placing electrodes directly on the brain, the Children's researchers were able to obtain data at extremely high temporal resolution – picking up signals as fast as 100 milliseconds (thousandths of

object was presented in different sizes and orientations.

seconds) after presentation of a visual stimulus -- and monitor activity in very discrete, specific locations.

[Click here for more information.](#)

Kreiman collaborated with Children's neurosurgeon Joseph Madsen, MD, who was already doing brain mapping in patients with epilepsy, a procedure that ensures that surgery to remove damaged brain tissue will not harm essential brain functions. The team implanted electrodes in the brains of each of 11 adolescents and young adults with epilepsy (anywhere from 48 to 126 electrodes per patient) in the areas where their seizures were believed to originate. While the electrodes recorded brain activity, the patients were presented with a series of images from five different categories -- animals, chairs, human faces, fruits and vehicles -- of different sizes and degrees of rotation.

The recordings demonstrated that certain areas of the brain's visual cortex selectively recognize certain categories of objects, responding so strongly and consistently that the researchers could use mathematical algorithms to determine what patients were viewing, just by examining their pattern of neural responses. Moreover, these responses occurred regardless of the object's scale or degree of rotation. And recognition was evident within as little as 100 milliseconds, too fast for information to be relayed from the visual cortex to the temporal lobe and back again.

Kreiman and Madsen are now extending these studies by showing patients movies -- more closely resembling the way we see images in real life. Since each patient is allowed to choose his or her own movie, Kreiman's team must analyze its visual content frame by frame and then link that data to the patient's brain activity.

Why is it important to tease apart visual processing in this way? Kreiman envisions using the vision algorithms discovered in humans to teaching computers how to see as well as people, so that they could help in real-life applications such as spotting terrorists in airports, helping drivers avoid collisions with hard-to-see pedestrians, or analyzing hundreds of tumor samples looking for malignancy. A more futuristic application would be the design of brain-computer interfaces that would allow people with visual impairment to have at least partial visual perception.

Over the last decade, Kreiman and Itzhak Fried, MD, PhD, of UCLA have studied the hippocampus, which is involved in memory, and found individual brain cells that responded consistently when people were shown specific images such as pictures of Jennifer Aniston and Bill Clinton. Kreiman is interested in further exploring the relation between visual processing and memory and incorporating the physiological knowledge into computational algorithms.

###

The current study was funded by the Epilepsy Foundation, the Whitehall Foundation, the Klingenstein Fund and the Children's Hospital Boston Ophthalmology Foundation.

Citation: Liu H; et al. Timing, timing, timing: Fast decoding of object information from intracranial field potentials in human visual cortex. *Neuron* (2009), doi:[10.1016/j.neuron.2009.02.025](https://doi.org/10.1016/j.neuron.2009.02.025).

Children's Hospital Boston is home to the world's largest research enterprise based at a pediatric medical center, where its discoveries have benefited both children and adults since 1869. More than 500 scientists, including eight members of the National Academy of Sciences, 11 members of the Institute of Medicine and 12 members of the Howard Hughes Medical Institute comprise Children's research community. Founded as a 20-bed hospital for children, Children's Hospital Boston today is a 397-bed comprehensive center for pediatric and adolescent health care grounded in the values of excellence in patient care and sensitivity to the complex needs and diversity of children and families. Children's also is the primary

pediatric teaching affiliate of Harvard Medical School. For more information about the hospital and its research visit: www.childrenshospital.org/newsroom.

[[Print](#) | [E-mail](#) | [Share](#)] [[Close Window](#)]

